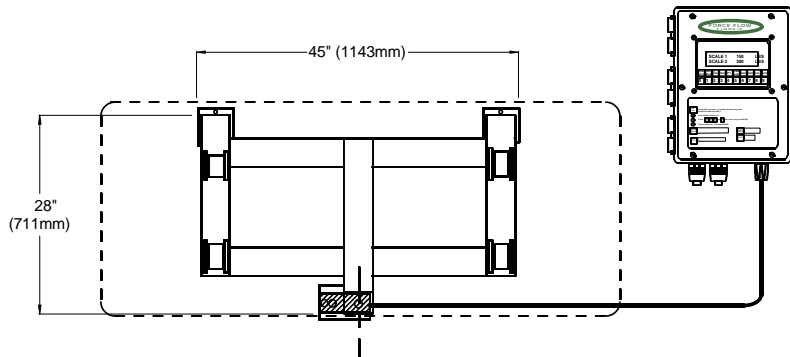


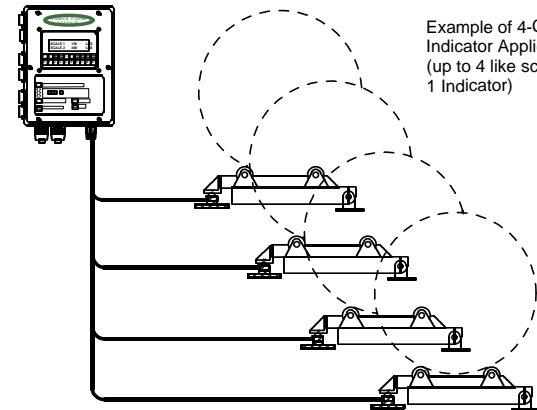
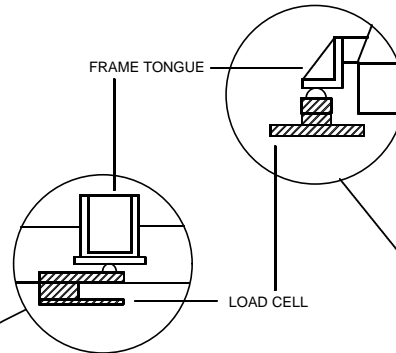
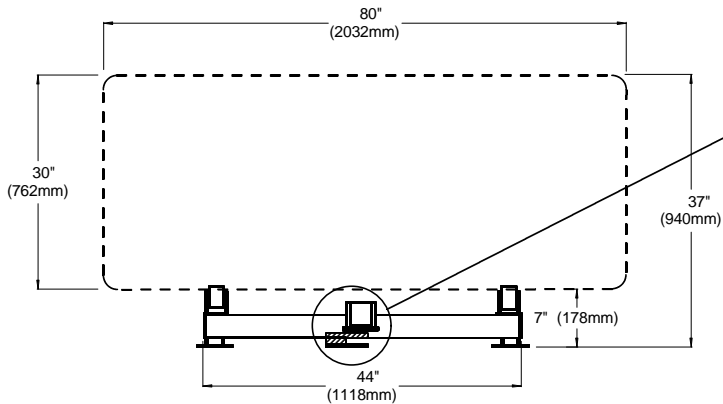
_____ Model No. of Indicator (Lbs or Kgs _____)

_____ Model Number of Scale Frame

_____ Feet of Cable per Scale (20' Std)



IMPORTANT: Position the Load Cell so that it is parallel with the scale frame. Read the "Installation" section carefully for proper placement of the frame.



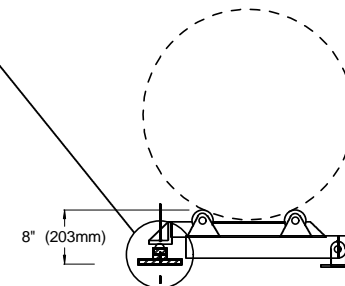
Example of 4-Channel Indicator Application (up to 4 like scales on 1 Indicator)

Model Number (Frame and Load Cell)

DR40 (4000 lbs)
DR20K (2000 kg)

Model Number (Wizard 4000 Indicator)

4000-1 1-Channel
4000-2 2-Channel
4000-3 3-Channel
4000-4 4-Channel



W.1.101



1150-D Burnett Ave, Concord, CA 94520 USA
1-800-893-6723 US & Canada, Fax: 925-686-6713
www.forceflow.com / info@forceflow.com

File: T4IO&MTONELECWIZSGLO&M.tcw (J02.pdf) (WEB: TON1WIZ.pdf)

**ELECTRONIC SINGLE TANK SCALE
CHLOR-SCALE with WIZARD INDICATOR
(4000 lb or 2000 kg Capacity)**

Drawn by: SLP
Date: 09/01/95
Revised: 01/21/97
Scale: NONE

Drawing Number
30280